

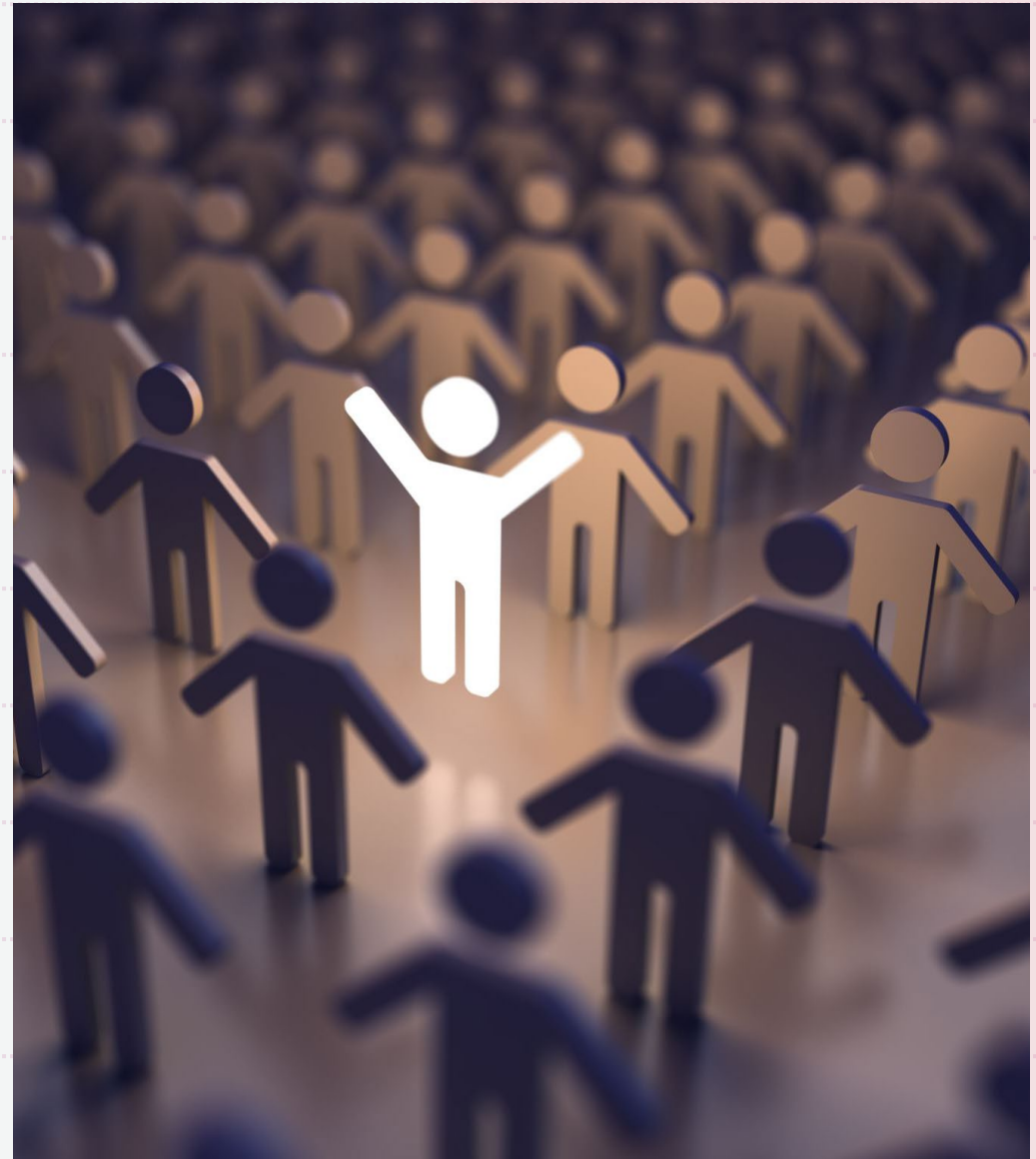
Caseload Ratio Public Input Meeting

April 21, 2022

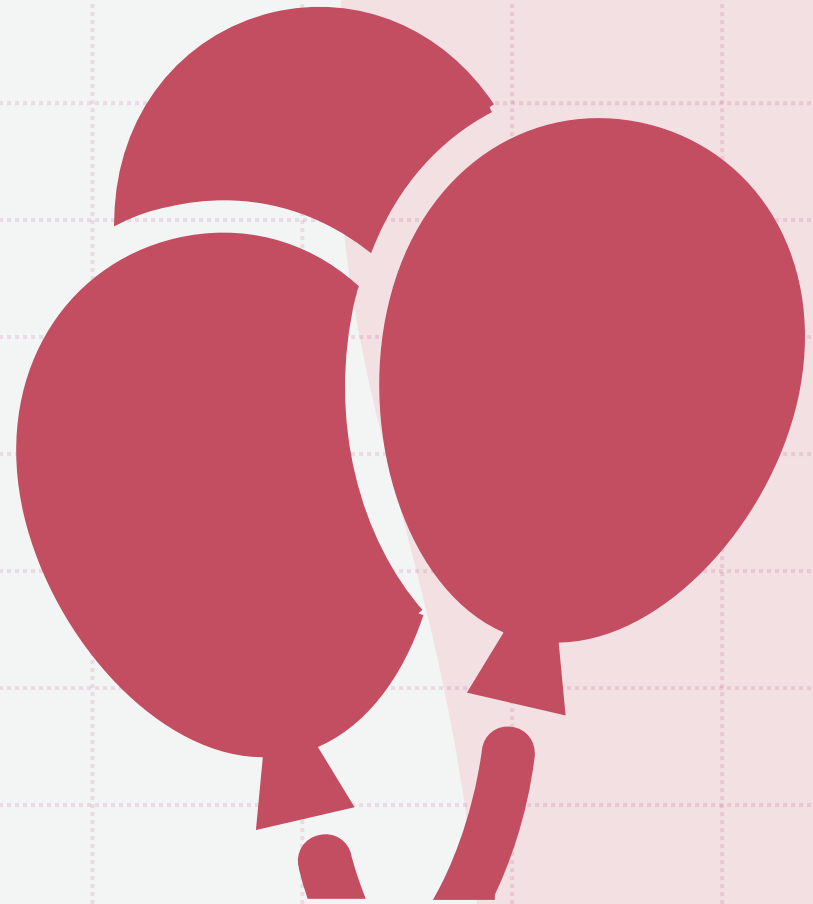
CJ Cook

Manager, Community Engagement

Inland Regional Center (IRC)



▶ **Welcome**



DDS Letter to IRC

<https://www.inlandrc.org/wp-content/uploads/2021/09/IRC-2021-POC-Caseload-Ratio-FINAL-07-02-2021.pdf>

Steps to Solicit Feedback

1. Posted a notice to clients, families, staff, and community members soliciting input on bringing caseloads into compliance

2. Posted survey on social media

3. Option to submit opinions via survey, email, fax, or standard mail: community@inlandrc.org

4. Opportunity of attending a Public Input Meeting via Zoom on April 21, 2022

5. Vendor Advisory Committee (VAC) meeting on April 18, 2022

6. State Council on Developmental Disabilities (SCDD) via email on March 23, 2022

The March 2022 Caseload Ratio Data

Regional Center	On Waiver	Under 3 Years	Movers Over 24 Months	Movers Between 12 and 24 Months	Movers Within Last 12 Months	Over 3 Years, Non-Waiver, Non-Mover	Complex Needs	Low or No POS
W&I Code Required Ratios	1:62	1:62	1:62	1:45	1:45	1:66	1:25	1:40
IRC Number of Individuals Served	15,524	4,915	264	13	5	20,096	117	0
IRC Ratios	1:77	1:67	1:53	1:45	1:33	1:81	1:28	N/A
CA Average	1:79	1:65	1:60	1:52	1:32	1:82	1:23	1:38

Compared to 2021

Regional Center	On Waiver*	Under 3 Years*	Movers Over 24 Months	Movers Between 12 and 24 Months	Movers Within Last 12 Months	Over 3 Years, Non-Waiver, Non-Mover*	Complex Needs*
W&I Code Required Ratios	1:62	1:62	1:62	1:45	1:45	1:66	1:25
IRC Number of Individuals Served	14,300	4,101	261	9	4	19,951	125
IRC Ratios	1:77	1:65	1:55	1:48	1:32	1:82	1:32
CA Average	1:77	1:58	1:59	1:38	1:29	1:81	1:25

Compared to 2020

Regional Center	On Waiver*	Under 3 Years*	Movers Over 24 Months	Movers Between 12 and 24 Months	Movers Within Last 12 Months	Over 3 Years, Non-Waiver, Non-Mover*	Complex Needs
W&I Code Required Ratios	1:62	1:62	1:62	1:45	1:45	1:66	1:25
IRC Number of Individuals Served	14,226	4,884	252	11	6	18,689	136
IRC Ratios	1:74	1:73	1:50	1:43	1:25	1:78	1:74
CA Average	1:75	1:64	1:56	1:35	1:23	1:79	1:37

Growth

IRC has continued to experience tremendous growth in our client population during the past year.

At the end of February 2022, IRC had 42,584 clients.

IRC has continued to post employment opportunities for Consumer Service Coordinators (CSCs) and hire those positions.

Since June 30, 2021, IRC has hired 81 new Case Management growth positions. However, IRC also lost and had to refill 52 additional Case Management positions. During this period IRC filed 35 growth positions.

We continue to advertise for new employees and continue to hire.

System Wide Challenges

- Service Coordinator short fall increased to 17%, from 2021 (921) to 2022 (1,077)
- 83% (314.2K) of California's I/DD Clients are served in caseloads of 1:70 or higher

Rules

1

Have read the letter regarding Caseload Ratio

2

Raise your hand to speak - We will unmute your mic

3

No testimonials - input should be related to how IRC can lower the caseload ratio.

Note: We acknowledge hiring additional staff is the logical answer. However, funding is the barrier.

4

Feedback is limited to 5 minutes

Questions?

- Considering that the additional funding requested to hire more CSCs and lower the current caseload ratio was *not* included in the budget, how can IRC lower the caseload ratio?



Public Input



Thank You



Next Meeting

- IRC CY 2021 Performance Contract Report
- May 9, 2022
- 6:00 - 7:00 PM (Zoom)
- <https://www.inlandrc.org/live/>

INLAND REGIONAL CENTER

PERFORMANCE CONTRACT 2021 REPORT OUTCOME **PUBLIC INPUT MEETING**

At this meeting, we will review how IRC has performed in the last year. We will discuss our Performance Contract report and take input from the IRC community.

MONDAY MAY 9, 2022
LUNES 9 DE MAYO 2022
6:00 - 7:00 PM

For more information, please
email community@inlandrc.org



CONTRATO DE RENDIMIENTO 2021 INFORME DE RESULTADOS **FORO PUBLICO**

En esta reunión, revisaremos el desempeño de IRC en el último año. Discutiremos nuestro reporte de Contrato de Rendimiento y tomaremos aportes de la comunidad de IRC.

This event will be broadcast at:
(Este evento será transmitido en vivo en)
www.inlandrc.org/live

Para más información, envíe un correo
electrónico a community@inlandrc.org